

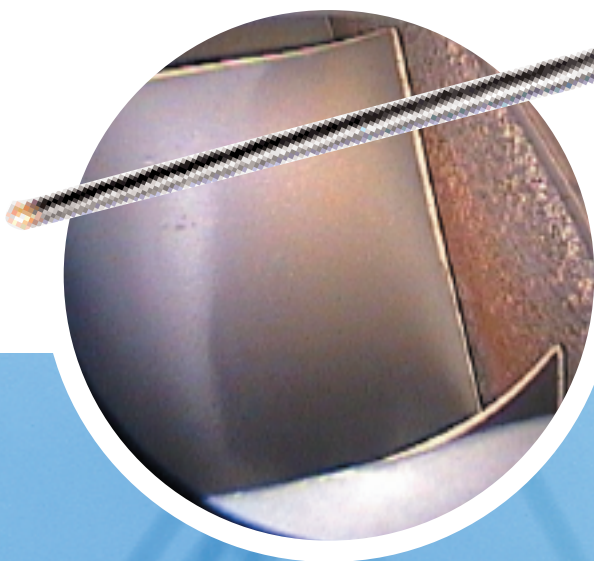
KARL STORZ BORESCOPIES

Karl Storz Borescopes are hand-made and crafted to produce the sharpest, brightest inspection images. The patented Hopkins rod lens design provides true color, bright, sharp images with greater contrast.

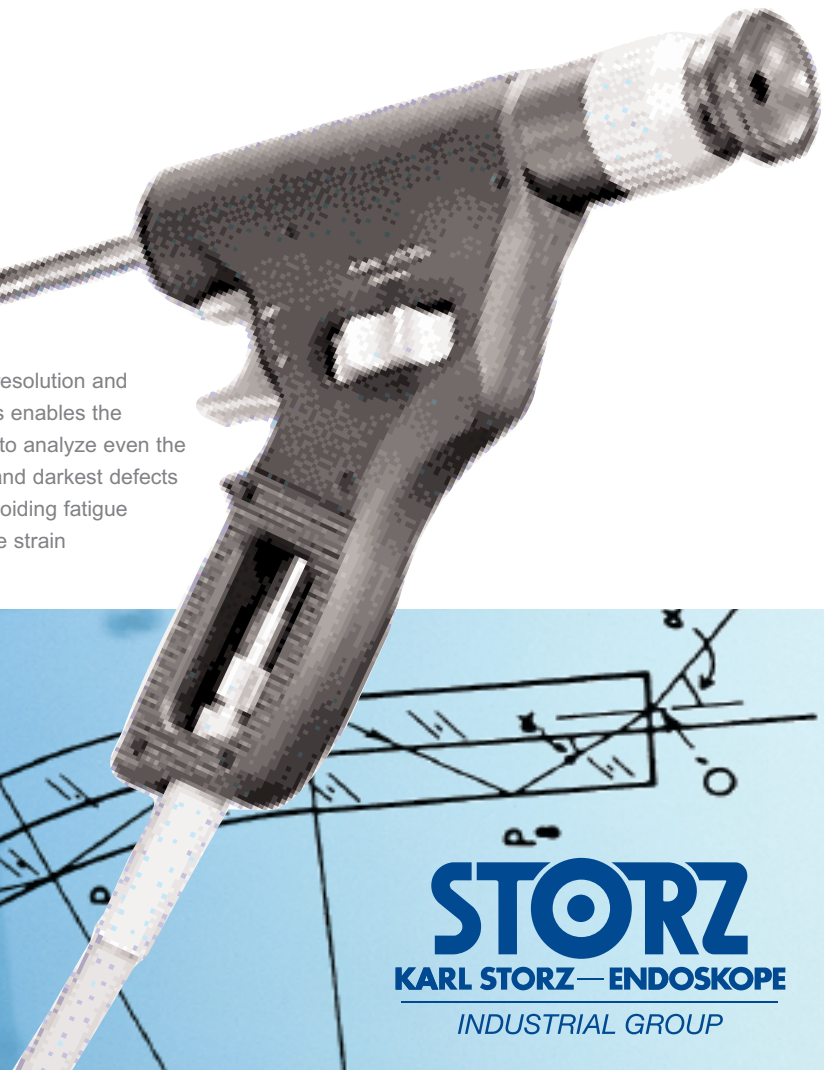
- Focus adjustment for greater depth of field
- Video recording and digital documentation with the Telecam
- 0°, 30°, 45°, 70°, 90°, 120°, direction of view
- Working length up to 58 inches
- Durable stainless steel insertion tube
- Protective sleeve for enhanced durability and service life
- Pressure resistance up to +5 bar
- Resistant to oil, fuel, and solvents
- Temperature resistance up to 150° C (302° F)



Protective sleeve for enhanced durability and service life



Superior resolution and brightness enables the inspector to analyze even the smallest and darkest defects quickly avoiding fatigue and/or eye strain



STORZ
KARL STORZ — ENDOSKOPE
INDUSTRIAL GROUP

BORESCOPIES

Karl Storz Standard Borescopes

Outside Diameter	Nominal Working Length	Direction of View	Field of View
3.8 mm/.149"	50 mm/1.96" to 340mm/13.39"	0°,30°,70°,90°,120°	80°, 100°
4.3mm/.169"	650mm/25.6"	90°	100°
4.5 mm/.177"	490mm/19.3" & 690mm/27.1"	0°, 30°, 70°, 90°	100°
5.8 mm/.228"	300mm/11.81" & 470mm/18.5"	0°, 30°, 90°, 120°	67°
6.5 mm/.255"	90mm/3.54" to 780mm/30.70"	0°, 30°, 45°, 70°, 90°, 120°	10°, 30°, 45°, 67°, 90°
8 mm/.315"	90mm/3.54" to 780mm/30.70"	0°, 30°, 45°, 70°, 90°, 120°	10°, 30°, 45°, 67°, 90°
10mm/.394"	180mm/7.09" to 760mm/29.92"	0°, 30°, 45°, 70°, 90°, 120°	10°, 30°, 45°, 67°, 90°

Karl Storz Long Rigid Borescopes

Outside Diameter	Length Working	Direction-of-View	Field-of-View
8-12mm/315" - .472"	970mm/38.19"	90°	67°
8-12mm/315" - .472"	1140mm/44.88"	0°,30°,70°,90°,120°	67°
8-12mm/315" - .472"	1300mm/51.18"	90°	67°
8-12mm/315" - .472"	1480mm/58.27"	0°,30°,70°,90°,120°	67°

The outer diameter is 8 mm for 700 mm measured from the lens side and 12 mm along the remainder of the telescope up to the eyepiece.

Karl Storz Swing Prism Scope

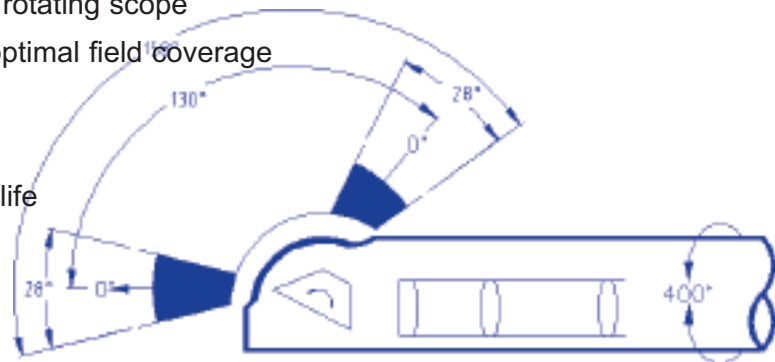
Outside Diameter	Working Length	Direction-of-View	Field-of-View
6mm/.240"	315mm/12.4"	0° / 130°	28° / 45°
6mm/.240"	505mm/19.9"	0° / 130°	28° / 45°
6mm/.240"	640mm/25.2"	0° / 130°	28° / 45°
8mm/.310"	370mm/14.6"	0° / 130°	28° / 45°
8mm/.310"	470mm/18.5"	0° / 130°	28° / 45°
8mm/.310"	670mm/26.38"	0° / 130°	28° / 45°

Karl Storz Hopkins II Scopes with Super Bright Lenses Ideal for High Speed Video Applications

Outside Diameter	Working Length	Direction-of-View	Field-of-View
8 mm/0.315"	300mm/11.81"	0°, 30°, 70°, 90°	67°

Swing Prism Borescopes

- Observation range -14° up to +144°, rotate sheath 400°
- Single-hand control for full adjustment to focus, DOV and orbital scan
- Indicator index in image defines image position when rotating scope
- Ring-light type illumination around the lens provides optimal field coverage
- Easy, ergonomic handle eliminates fatigue
- Universal handle for left- and right-handed users
- Protective sleeve for enhanced durability and service life



ISO 9001 backed by
the only 2-year warranty

For additional information call 800-329-9618 or visit www.karlstorzindustrial.com
Karl Storz Industrial-America, Inc.
600 Corporate Pointe
Culver City, CA 90230-7600
Phone: 800-329-9618 Fax: 310-410-2785
Email: IndustrialSupport@karlstorzindustrial.com

ST33-905

STORZ
KARL STORZ — ENDOSKOPE
INDUSTRIAL GROUP